

12/11/13 Agenda

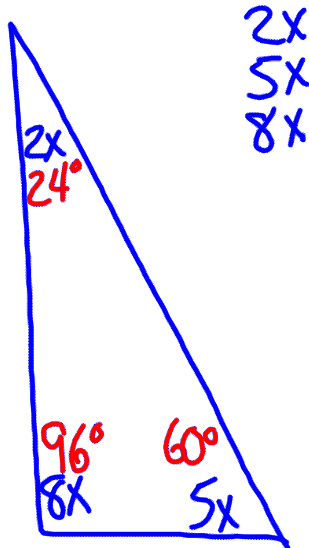
- ***Remediation Packet is on line DUE by FRIDAY!***
- ***Retake MUST be taken before Finals Start!***

- Schedule
 - Monday-Wednesday: Section 6.1 Ratios & Proportions
 - Thursday - Tuesday: Review for Final
- Section 6.1 - Ratios & Proportions
- Homework Worksheet 3

Section 6.1 - Ratios & Proportions

Targets 6A & 6B

The measures of the angles in a triangle are in the *extended ratio* of 2 : 5 : 8. Find the measures of the angles.

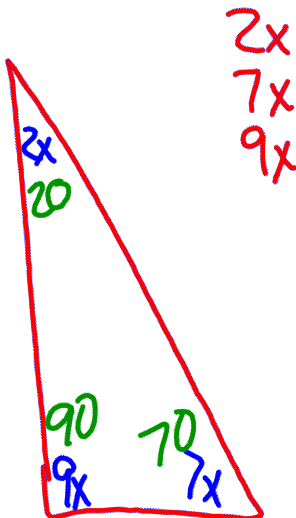


$$2x + 5x + 8x = 180^\circ$$

$$\frac{15x}{15} = \frac{180^\circ}{15}$$

$$x = 12^\circ$$

The measures of the angles in a triangle are in the *extended ratio* of 2 : 7 : 9. Find the measures of the angles.



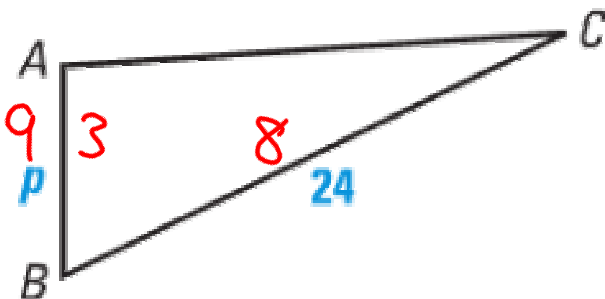
$$2x + 7x + 9x = 180^\circ$$

$$18x = 180$$

$$x = 10$$

Use the ratio of the sides to solve for the variable.

$AB:BC$ is 3:8.



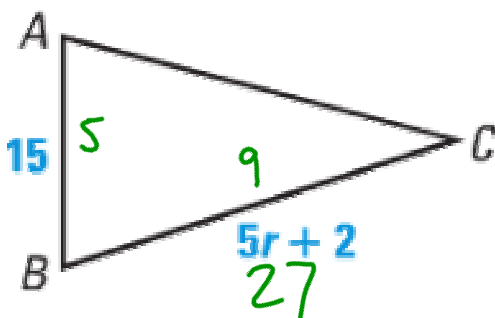
$$\frac{AB}{BC} = \frac{3}{8} = \frac{P}{24}$$

$$8P = 3 \cdot 24$$

$$8P = 72$$

$$P = 9$$

$AB:BC$ is 5:9.



$$\frac{AB}{BC} = \frac{5}{9} = \frac{15}{5r+2}$$

$$9 \cdot 15 = 5(5r+2)$$

$$135 = 25r + 10$$

$$\frac{125}{25} = \frac{25r}{25}$$

$$5 = r$$